

CQ 8-1 敗血症性ショックの初期蘇生において 赤血球輸血はどのように行うか？

検索データベース

- MEDLINE (PubMed/Ovid)
- CENTRAL
- 医学中央雑誌
- その他 ()

検索式とヒット数

PubMed search strategy (検索日 2019年5月2日)

#1	"sepsis"[Mesh] OR "shock, septic"[Mesh] OR "Septic shock"[tiab] OR "sepsis"[tiab] OR "septic"[tiab]	192,328
#2	"systemic inflammatory response syndrome"[Mesh] OR "systemic inflammatory response syndrome"[tiab] OR "SIRS"[tiab]	123,852
#3	"multiple organ failure"[Mesh] OR "organ failure"[tiab] OR "organ dysfunction"[tiab] OR "MOF"[tiab] OR "MODS"[tiab]	37,685
#4	Bacteremia[mesh] OR Bacteremia[tiab]	40,567
#5	#1 OR #2 OR #3 OR #4	231,930
#6	Shock[mesh] OR shock[tiab] OR Hypotension[Mesh] OR hypotensi*[tiab] OR unstable[tiab]	343,157
#7	#5 AND #6	53,965
#8	"Erythrocyte Transfusion"[Mesh] OR Erythrocyte Transfusion[tiab] OR Erythrocyte Transfusions[tiab]	8,668
#9	Red Blood Cell Transfusion[tiab] OR Red Blood Cell Transfusions[tiab] OR RBC transfusion[tiab] OR RBC transfusions[tiab]	4,859
#10	"Blood transfusion"[Mesh] OR "Blood transfusion"[tiab] OR "Blood transfusions"[tiab]	107,476
#11	"Blood component transfusion"[Mesh] OR Blood component transfusion[tiab] OR Blood component transfusions[tiab]	22,145
#12	("Red Blood Cell"[tiab] OR RBC[tiab] OR erythrocyte[tiab]) AND (Transfusion[tiab] OR Transfusions[tiab])	10,561
#13	#8 OR #9 OR #10 OR #11 OR #12	111,307
#14	(randomized controlled trial[pt] OR controlled clinical trial[pt] OR	3,890,430

	randomized[tiab] OR placebo[tiab] OR drug therapy[sh] OR randomly[tiab] OR trial[tiab] OR groups[tiab] NOT (animals [mh] NOT humans [mh]))	
#15	#7 AND #13 AND #14	362

CENTRAL search strategy(検索日 2019年5月2日)

#1	MeSH descriptor: [Sepsis] explode all trees	3998
#2	(Sepsis):ti,ab,kw	10,248
#3	MeSH descriptor: [Systemic Inflammatory Response Syndrome] explode all trees	4,328
#4	("Systemic Inflammatory Response Syndrome"):ti,ab,kw	1,026
#5	(SIRS):ti,ab,kw	676
#6	MeSH descriptor: [Multiple Organ Failure] explode all trees	384
#7	("Multiple Organ Failure"):ti,ab,kw	1,326
#8	(MOF):ti,ab,kw	141
#9	("Multiple Organ Dysfunction"):ti,ab,kw	371
#10	(MODS):ti,ab,kw	247
#11	Mesh descriptor: [Shock, Septic] explode all trees	771
#12	(septic) :ti,ab,kw	4,108
#13	MeSH descriptor: [Bacteremia] explode all trees	886
#14	(Bacteremia):ti,ab,kw	2383
#15	#1 OR #2 OR #3 OR #4 OR #5 OR #6 OR #7 OR #8 OR #9 OR #10 OR #11 OR #12 OR #13 OR #14	16,732
#16	MeSH descriptor: [Shock] explode all trees	1,946
#17	MeSH descriptor: [Hypotension] explode all trees	1,989
#18	(Shock):ti,ab,kw	9,213
#19	(hypotensi*):ti,ab,kw	16,055
#20	(unstable):ti,ab,kw	6,405
#21	#16 OR #17 OR #18 OR #19 OR #20	31,476
#22	#15 AND #21	4,194
#23	MeSH descriptor: [Erythrocyte Transfusion] explode all trees	575
#24	(Erythrocyte Transfusion):ti,ab,kw	2,133
#25	(Erythrocyte Transfusions):ti,ab,kw	866
#26	(Red Blood Cell Transfusion):ti,ab,kw	1,880
#27	(Red Blood Cell Transfusions):ti,ab,kw	1,057

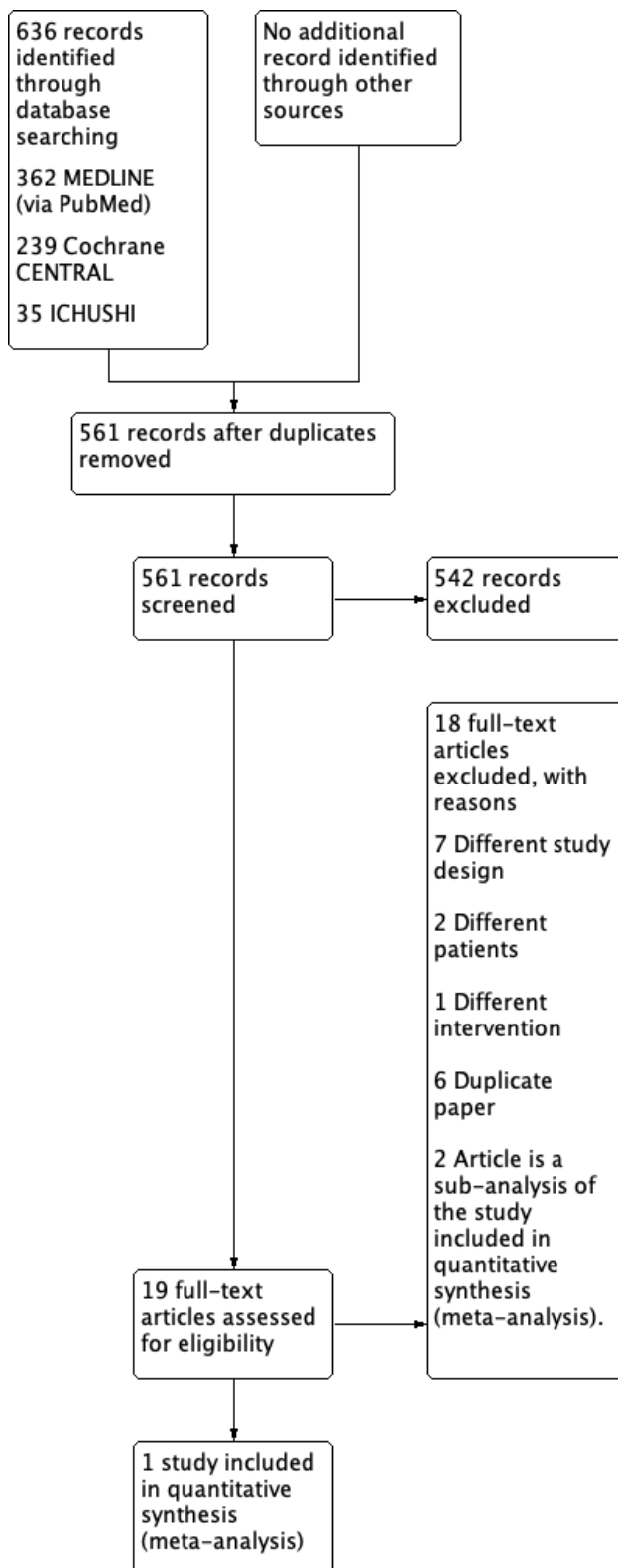
#28	(RBC Transfusion):ti,ab,kw	997
#29	(RBC Transfusions):ti,ab,kw	505
#30	MeSH descriptor: [Blood Component Transfusion] explode all trees	1,044
#31	(Blood component transfusion):ti,ab,k	447
#32	(Blood component transfusions):ti,ab,kw	148
#33	MeSH descriptor: [Blood Transfusion] explode all trees	3,372
#34	("Blood transfusion"):ti,ab,kw	7,601
#35	("Blood transfusions"):ti,ab,kw	1,565
#36	("Red Blood Cell" OR RBC OR erythrocyte):ti,ab,kw AND (Transfusion OR Transfusions) :ti,ab,kw	3,070
#37	#23 OR #24 OR #25 OR #26 OR #27 OR #28 OR #29 OR #30 OR #31 OR #32 OR #33 OR #34 OR #35 OR #36	10,857
#38	#22 AND #37	239



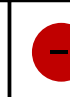

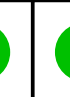

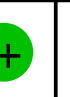
医学中央雑誌 search strategy(検索日 2019年4月29日)

#1	(敗血症/TH or 敗血症/TA) and (PT=会議録除く)	22,405
#2	(ショック-敗血症性/TH or 敗血症性ショック/TA) and (PT=会議録除く)	6,145
#3	(セプシス/TA or Sepsis/TA or セプティック T/A or Septic/TA) and (PT=会議録除く)	2,548
#4	(全身性炎症反応症候群/TH or 全身性炎症反応症候群/TA) and (PT=会議録除く)	17,730
#5	(SIRS/TA or "systemic inflammatory response syndrome"/TA) and (PT=会議録除く)	1,597
#6	(多臓器不全/TH or 多臓器不全/TA) and (PT=会議録除く)	6,286
#7	(MOF/TA or 多臓器障害/TA or 多臓器機能障害/TA or 多臓器機能不全/TA or MODS/TA or "multiple organ failure"/TA or "Multiple	282

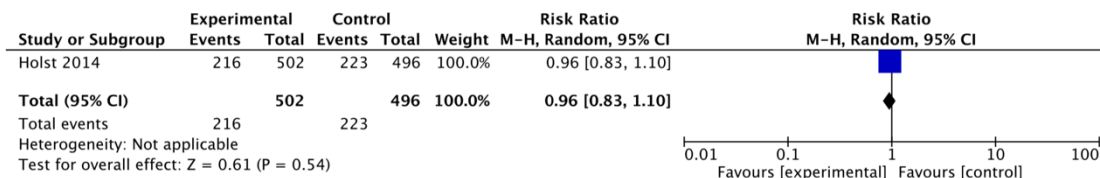
	organ dysfunction syndrome"/TA) and (PT=会議録除く)	
#8	#1 OR #2 OR #3 OR #4 OR #5 OR #6 OR #7	29,781
#9	(ショック/TH or ショック/TA or shock/TA) and (PT=会議録除く)	34,689
#10	(低血圧/TH or 低血圧/TA or Hypotensi*/TA or 血圧低下/TA or "Low blood pressure"/TA or "Low blood pressures"/TA) and (PT=会議録除く)	16,444
#11	(不安定/TA or unstable/TA) and (PT=会議録除く)	20,711
#12	#9 OR #10 OR #11	69,461
#13	#8 AND #12	12,921
#14	((赤血球輸血/TH or 赤血球輸血/TA or RBC/TA)) and (PT=会議録除く)	3,485
#15	(輸血/TH or 輸血/TA or transfusion/TA) and (PT=会議録除く)	33,801
#16	((成分輸血/TH or 成分輸血/TA)) and (PT=会議録除く)	3,483
#17	#14 OR #15 OR #16	34,969
#18	#13 AND # 17	598
#19	(ランダム化比較試験/TH or 準ランダム化比較試験/TH or ランダム化/AL or 無作為化/AL or 比較試験/AL or 臨床試験/AL or プラセボ/AL or 対照/AL or コントロール/AL or 臨床研究/AL or 治験/AL) and (PT=会議録除く)	249,263
#20	#18 AND #19	35

PRISMA フロー図

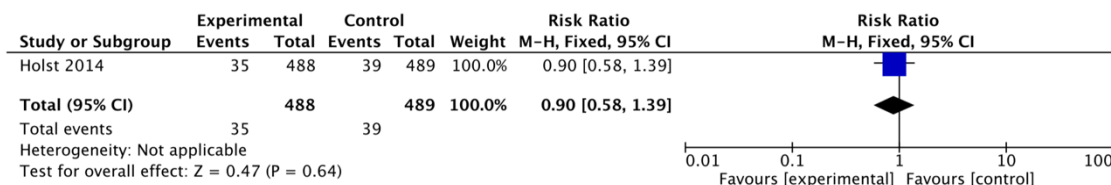


Holst 2014		Random sequence generation (selection bias)
		Allocation concealment (selection bias)
		Blinding of participants and personnel (performance bias)
		Blinding of outcome assessment (detection bias)
		Incomplete outcome data (attrition bias)
		Selective reporting (reporting bias)
		Other bias

アウトカム① 90日死亡率



アウトカム② 有害事象：虚血イベント



ファンネルプロット

対象研究1つのみなので該当せず