

CQ 4-6 敗血症に対する経験的抗菌薬は、敗血症認知後1時間以内を目標に投与開始するか？

### 検索データベース

- MEDLINE (PubMed/Ovid)
- CENTRAL
- 医学中央雑誌
- その他 ( )

### 検索式とヒット数

PubMed search strategy (検索日 2019年4月29日)

#1	Sepsis[mesh] OR Sepsis[tiab] OR “Systemic inflammatory response syndrome”[mesh] OR “Systemic inflammatory response syndrome”[tiab] OR SIRS[tiab] OR “Multiple Organ Failure”[mesh] OR “Multiple Organ Failure”[tiab] OR MOF[tiab]	<a href="#">190478</a>
#2	(“Anti-bacterial agent”[mesh] OR “Anti-bacterial agent”[tiab] OR “Anti-infective agent”[mesh] OR “Anti-infective agent”[tiab] OR Antibiotic[tiab] OR Drug therapy[tiab] OR Drug therapy[mesh])	<a href="#">1482932</a>
#3	((“Time factors” [mesh] OR “Time factors”[tiab]) OR (“Time to treatment” [mesh] OR “Time to treatment” [tiab]) OR (“Emergency Service, Hospital” [mesh] OR “Emergency service” [tiab] OR “Emergency department”[tiab]) OR “1 hour”[tiab]))	<a href="#">1286046</a>
#4	(randomized controlled trial[pt] OR controlled clinical trial[pt] OR randomized[tiab] OR placebo[tiab] OR drug therapy[sh] OR randomly[tiab] OR trial[tiab] OR groups[tiab] NOT (animals [mh] NOT humans [mh]))	<a href="#">3885958</a>
#5	“Observational study” [pt] OR “Epidemiologic Studies” [Mesh] OR “Case-Control Studies” [Mesh] OR “Retrospective Studies” [Mesh] OR “Cohort Studies” [Mesh] OR “Longitudinal Studies”[Mesh] OR “Prospective Studies” [Mesh] OR “Cross-Sectional Studies” [Mesh] OR (“Observational Study” [tiab] OR “Observational Studies” [tiab]) OR (“Epidemiologic Study” [tiab] OR “Epidemiologic Studies” [tiab]) OR “Case-Control” [tiab] OR cohort [tiab] OR (“Longitudinal Studies” [tiab] OR “Longitudinal Study” [tiab]) OR (“Prospective Study” [tiab] OR “Prospective Studies” [tiab]) OR (“Retrospective Study” [tiab] OR “Retrospective Studies” [tiab]) OR (“Cross-Sectional Study” [tiab] OR “Cross-Sectional Studies” [tiab])	<a href="#">2714105</a>

#6	#1 and #2 and #3 and (#4 or #5)	<a href="#">1830</a>
----	---------------------------------	----------------------

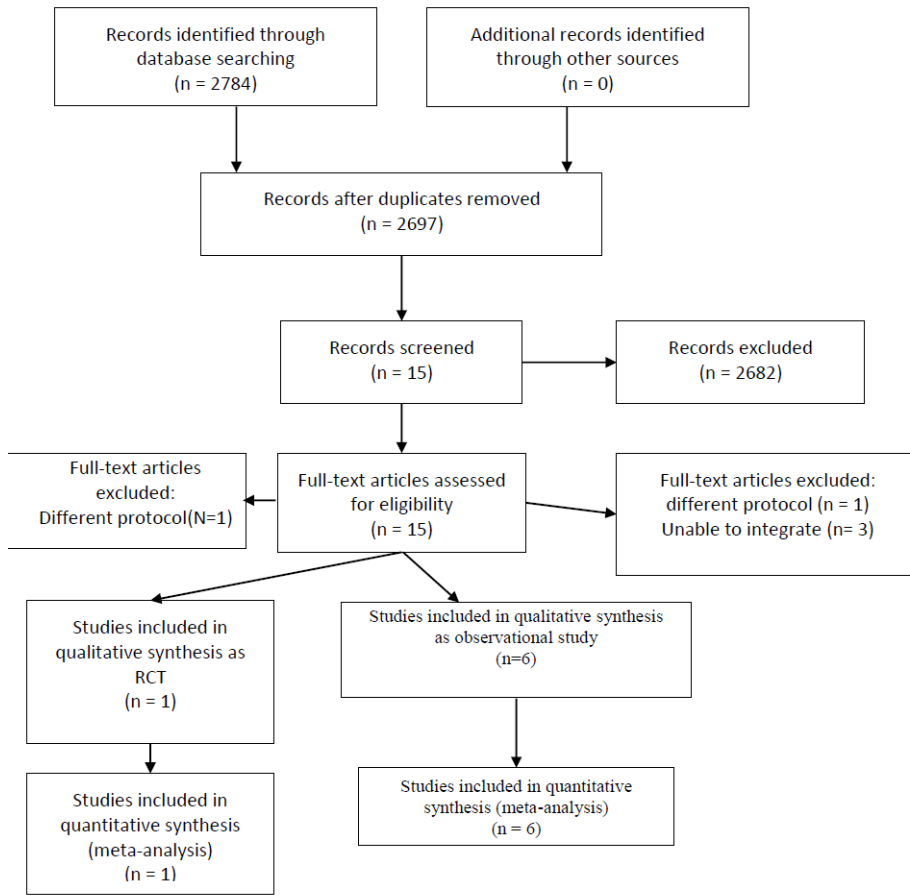
CENTRAL search strategy(検索日 2019年4月29日)

#1	(sepsis[mesh] OR sepsis[tiab]) OR ("Multiple Organ Failure"[mesh] OR "Multiple Organ Failure"[tiab] OR MOF[tiab]) OR ("Systemic inflammatory response syndrome"[mesh] OR "Systemic inflammatory response syndrome"[tiab] OR SIRS[tiab])	13694
#2	("Anti-bacterial agent" [Mesh] OR "Anti-bacterial agent" [tiab]) OR (antibiotic[Mesh] OR antibiotic [tiab] OR antimicrobial [tiab]) OR ("anti-infective agent" [Mesh] OR "anti-infective agent" [tiab])	294866
#3	((("Time factor" [mesh] OR "Time factor"[tiab]) OR ("Time to treatment" [mesh] OR "Time to treatment" [tiab]) OR ("Emergency Service, Hospital" [mesh] OR "Emergency service" [tiab] OR "Emergency department"[tiab]) OR "1 hour"[tiab]))	210407
#4	#1 and #2 and #3	1334(Trials 1180)

医学中央雑誌 search strategy(検索日 2019年4月18日)

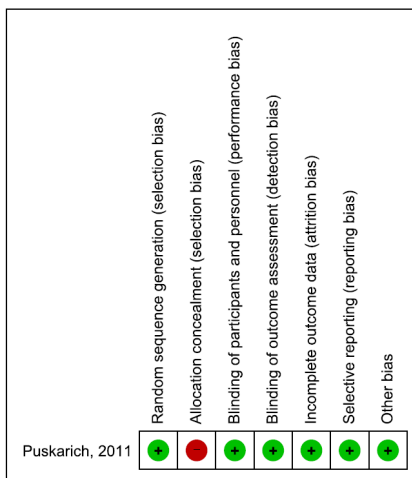
#1	(敗血症/TH or 敗血症/TA) or (全身性炎症反応症候群/TH or 全身性炎症反応症候群/TA or SIRS/TA) or (多臓器不全/TH or 多臓器不全/TA or MOF/TA) and (PT=会議録除く)	29,913
#2	(抗感染剤/TH or 抗感染剤/AL) or (抗細菌剤/TH or 抗細菌剤/AL) or (抗菌薬/TA or 抗生剤/TA or 抗生物質/TA) and (PT=会議録除く)	224,264
#3	((治療までの期間/TH or 治療までの期間/TA or 時間因子/TH or 時間因子/TA) or (病院救急医療サービス/TH or 病院救急医療サービス/TA or 救急外来/TA) 1時間/TA) and (PT=会議録除く)	461
#4	(ランダム化比較試験/TH or 準ランダム化比較試験/TH or ランダム化/AL or 無作為化/AL or 比較試験/AL or 臨床試験/AL or プラセボ/AL or 対照/AL or コントロール/AL or 臨床研究/AL) and (PT=会議録除く)	229,335
#5	観察研究/TH or 観察研究/AL or ケースコントロール/AL or 症例対照/AL or 縦断研究/AL or 後ろ向き/AL or コホート/AL or 前向き/AL or 横断研究/AL or 断面研究/AL or 疫学研究/AL and (PT=会議録除く)	87,162
#6	#1 and #2 and #3 and (#4 or #5)	3

**PRISMA フロー**



**Risk of Bias サマリー**

**アウトカム① 死亡率(RCT)**

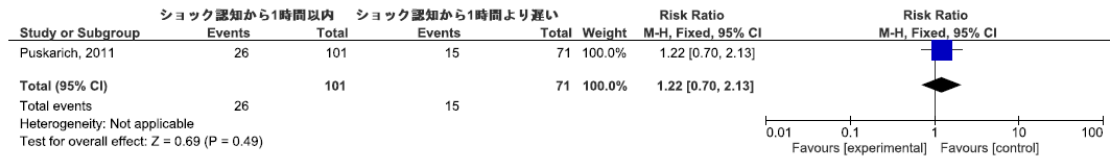


**アウトカム① 死亡率(観察研究)**

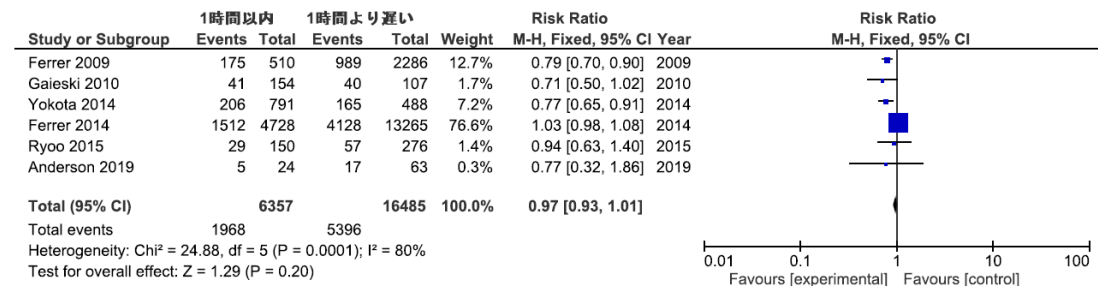
	Random sequence generation (selection bias)	Allocation concealment (selection bias)	Blinding of participants and personnel (performance bias)	Blinding of outcome assessment (detection bias)	Incomplete outcome data (attrition bias)	Selective reporting (reporting bias)	Other bias
Anderson 2019	●	●	●	●	●	●	●
Ferrer 2009	●	●	●	●	●	●	●
Ferrer 2014	●	●	●	●	●	●	●
Gaieski 2010	●	●	●	●	●	●	●
Liu 2017	●	●	●	●	●	●	●
Ryoo 2015	●	●	●	●	●	●	●
Scheer 2017	●	●	●	●	●	●	●
Yokota 2014	●	●	●	●	●	●	●

## フォレストプロット

### アウトカム① 死亡率(RCT)



### アウトカム① 死亡率(観察研究)



## ファンネルプロット

### アウトカム① 死亡率(観察研究)

