

## CQ20-5 ICUにおける家族の面会制限を緩和するべきか？

Pubmed 検索日2019年5月4日

#1	Search (((sepsis[MeSH Terms]) OR sepsis[Title/Abstract]) OR "Shock, Septic"[MeSH Terms]) OR "Shock, Septic"[Title/Abstract]	169448
#2	Search ((((((("Critical illness"[MeSH Terms]) OR "Critical illness"[Title/Abstract]) OR "Critical Care"[MeSH Terms]) OR "Critical Care"[Title/Abstract]) OR "Intensive Care Units"[MeSH Terms]) OR "Intensive Care Units"[Title/Abstract]) OR ICU[Title/Abstract]	175236
#3	Search (#1) OR #2	325973
#4	Search (((family[MeSH Terms]) OR family[Title/Abstract]) OR relatives[Title/Abstract]) OR visit*[Title/Abstract]	1192153
#5	Search (((((((extended[Title/Abstract]) OR flexible[Title/Abstract]) OR open[Title/Abstract]) OR unrestricted[Title/Abstract]) OR restrict*[Title/Abstract]) OR closed[Title/Abstract]) OR limit*[Title/Abstract]) OR allowed[Title/Abstract]) OR presence[Title/Abstract]	4173870
#6	Search (#4) AND #5	223161
#7	Search (#3) AND #6	2968
#8	Search (randomized controlled trial[pt] OR controlled clinical trial[pt] OR randomized[tiab] OR placebo[tiab] OR clinical trials as topic[mesh:noexp] OR randomly[tiab] OR trial[ti] NOT (animals[mh] NOT humans [mh]))	1124328
#9	Search ("Clinical Trial" [PT:NoExp] OR "clinical trial, phase i"[pt] OR "clinical trial, phase ii"[pt] OR "clinical trial, phase iii"[pt] OR "clinical trial, phase iv"[pt] OR "controlled clinical trial"[pt] OR "multicenter study"[pt] OR "randomized controlled trial"[pt] OR "Clinical Trials as Topic"[mesh:noexp] OR "clinical trials, phase i as topic"[MeSH Terms:noexp] OR "clinical trials, phase ii as topic"[MeSH Terms:noexp] OR "clinical trials, phase iii as topic"[MeSH Terms:noexp] OR "clinical trials, phase iv as topic"[MeSH Terms:noexp] OR "controlled clinical trials as topic"[MeSH Terms:noexp] OR "randomized controlled trials as topic"[MeSH Terms:noexp] OR "early termination of clinical trials"[MeSH Terms:noexp] OR "multicenter studies as topic"[MeSH Terms:noexp] OR "Double-Blind Method"[Mesh] OR ((randomised[TIAB] OR randomized[TIAB]) AND (trial[TIAB] OR trials[tiab])) OR ((single[TIAB] OR double[TIAB] OR doubled[TIAB] OR triple[TIAB] OR tripled[TIAB] OR treble[TIAB] OR treble[TIAB]) AND (blind*[TIAB] OR mask*[TIAB])) OR ("4 arm"[tiab] OR "four arm"[tiab]))	1372956
#10	Search ("Case-Control Studies"[Mesh:noexp] OR "retrospective studies"[mesh:noexp] OR "Control Groups"[Mesh:noexp] OR (case[TIAB] AND control[TIAB]) OR (cases[TIAB] AND controls[TIAB]) OR (cases[TIAB] AND controlled[TIAB]) OR (case[TIAB] AND comparison*[TIAB]) OR (cases[TIAB] AND comparison*[TIAB]) OR "control group"[TIAB] OR "control groups"[TIAB])	1633964
#11	Search (("cohort studies"[mesh:noexp] OR "longitudinal studies"[mesh:noexp] OR "follow-up studies"[mesh:noexp] OR "prospective studies"[mesh:noexp] OR "retrospective studies"[mesh:noexp] OR cohort[TIAB] OR longitudinal[TIAB] OR prospective[TIAB] OR retrospective[TIAB]))	2425018

#12	Search (("Cross-Sectional Studies"[Mesh:noexp] OR cross-sectional[TIAB] OR Prevalence[mesh:noexp] OR prevalence[tiab] OR "transversal study"[tiab]))	968089
#13	#8 or #9 or #10 or #11 or #12	4807090
#14	#7 and #13	1190
#15	#14 NOT neonatal	861
#16	#15 NOT (animals [mh] NOT humans [mh])	855

CENTRAL 検索日2019年5月4日

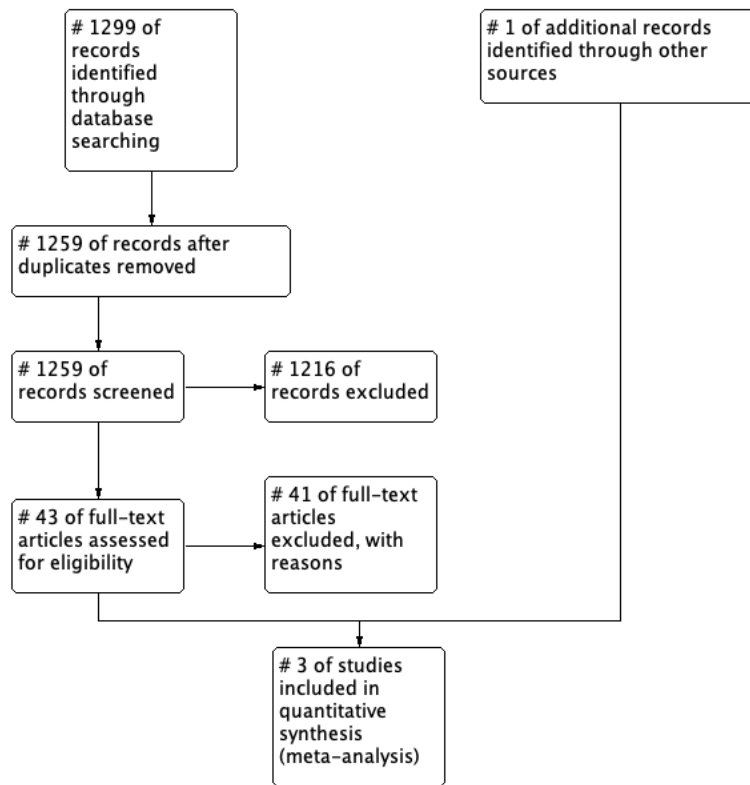
#1	MeSH descriptor: [Intensive Care Units] explode all trees	3288
#2	("Intensive Care Units"):ti,ab,kw	5161
#3	(ICU):ti,ab,kw	10457
#4	MeSH descriptor: [Sepsis] explode all trees	4028
#5	(Sepsis):ti,ab,kw	10323
#6	MeSH descriptor: [Shock, Septic] explode all trees	784
#7	("Shock, Septic"):ti,ab,kw	811
#8	MeSH descriptor: [Critical Care] explode all trees	1924
#9	("Critical Care"):ti,ab,kw	3542
#10	MeSH descriptor: [Critical Illness] explode all trees	1859
#11	("Critical Illness"):ti,ab,kw	3011
#12	#1 or #2 or #3 or #4 or #5 or #6 or #7 or #8 or #9 or #10 or #11	27598
#13	MeSH descriptor: [Family] explode all trees	8347
#14	(Family):ti,ab,kw	28447
#15	(relatives):ti,ab,kw	3595
#16	(visit*):ti,ab,kw	65222
#17	#13 or #14 or #15 or #16	96812
#18	(extended):ti,ab,kw	16858
#19	(flexible):ti,ab,kw	5880
#20	(open):ti,ab,kw	90534
#21	(presence):ti,ab,kw	43651
#22	(unrestricted):ti,ab,kw	1694
#23	(restrict*):ti,ab,kw	28109
#24	(closed):ti,ab,kw	9568
#25	(limit*):ti,ab,kw	101461
#26	(allowed):ti,ab,kw	14109
#27	#18 or #19 or #20 or #21 or #22 or #23 or #24 or #25 or #26	272790
#28	#17 and #27	25277
#29	#12 and #28	444

医学中央雑誌 search strategy (検索日 2019年5月2日)

#1	面会/AL and (制限/AL or 時間/TH or 時間/AL)	757
#2	面会/AL and (制限なし/AL or 自由/TH or 自由/AL)	90
#3	ICU/AL or 集中治療/AL or 集中治療室/AL	180881
#4	敗血症/TA and (重症/AL and 敗血症/AL) and 患者/AL	1140
#5	(#1 or #2) and (#3 or #4)	360

#6	(#5) and (PT=会議録除く CK=成人(19~44), 中年(45~64), 高齢者(65~))	58
----	---	----

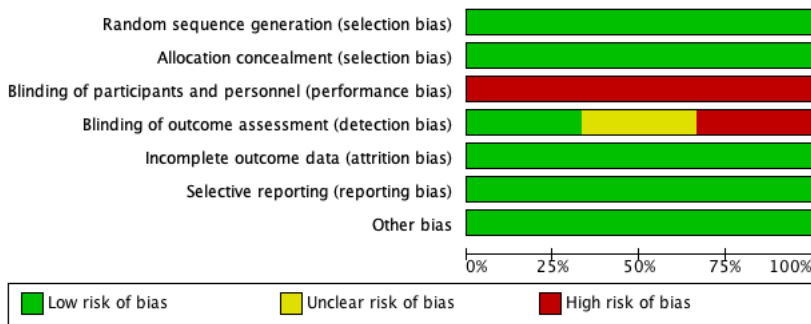
## PRISMA フロー



## Risk of Bias サマリー

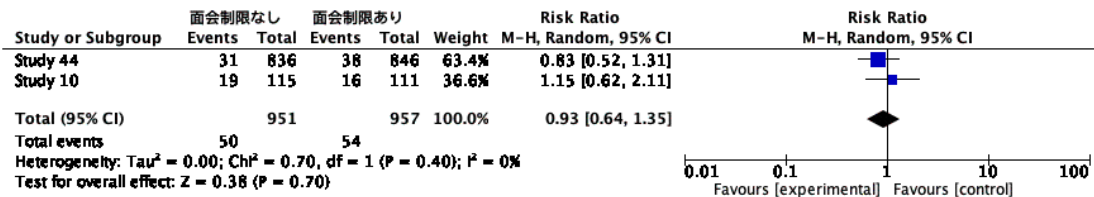
	Random sequence generation (selection bias)	Allocation concealment (selection bias)	Blinding of participants and personnel (performance bias)	Blinding of outcome assessment (detection bias)	Incomplete outcome data (attrition bias)	Selective reporting (reporting bias)	Other bias
Study 10	+	+	+	?	+	+	+
Study 33	+	+	+	+	+	+	+
Study 44	+	+	+	+	+	+	+

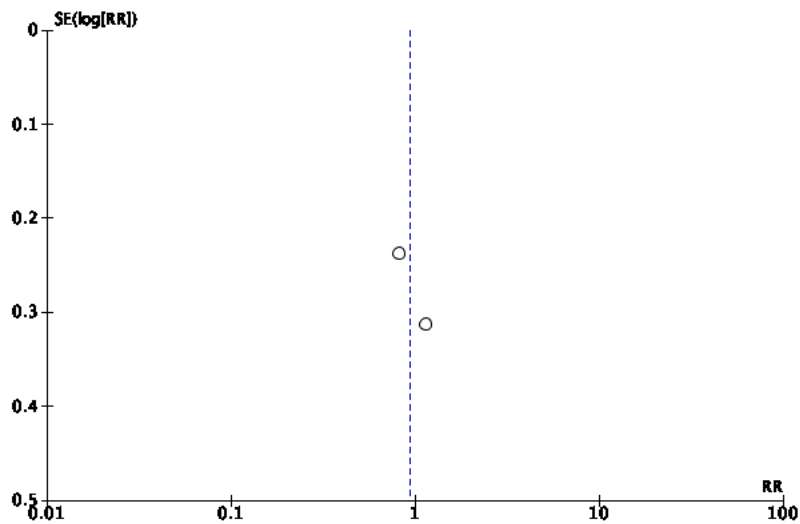
### Risk of Bias グラフ



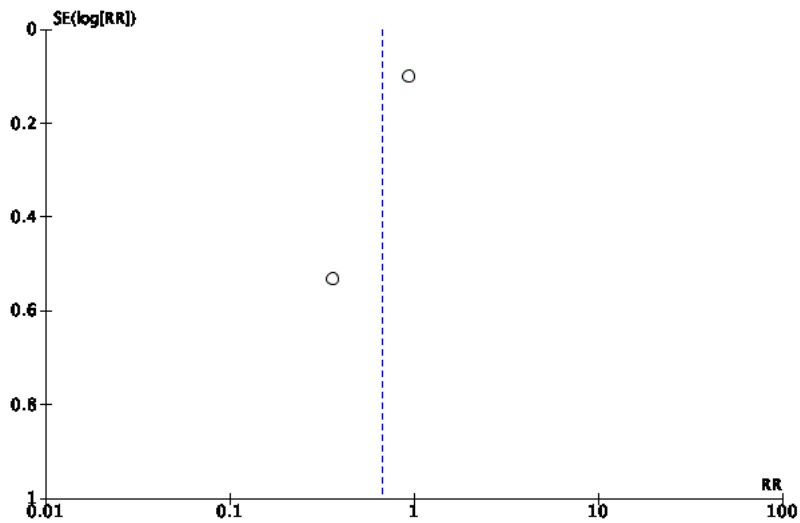
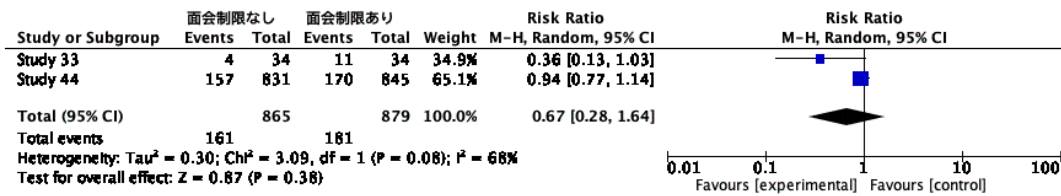
### フォレストプロット、Funnel plot

#### ① ICU感染症

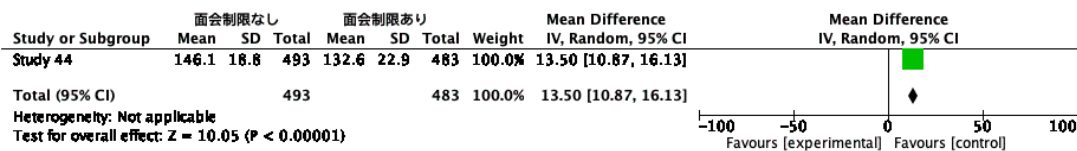


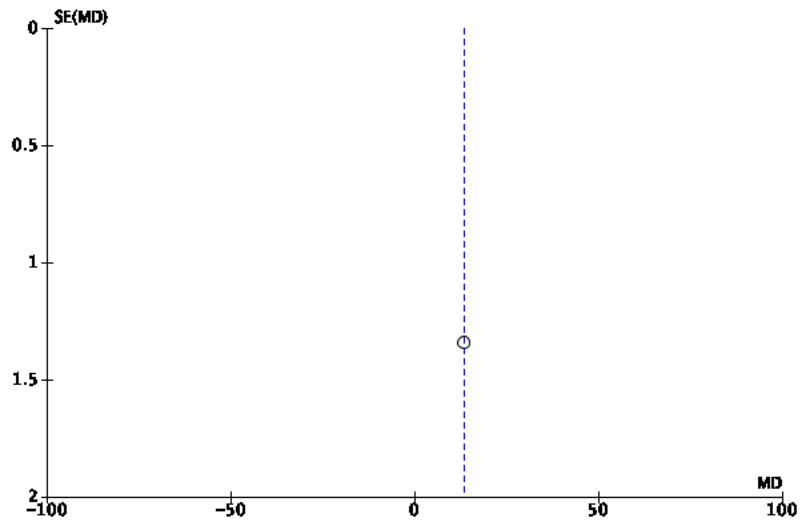


② せん妄発症



③ 家族 : CCFNI satisfaction score





④ 患者depression (HADS depression)

Study or Subgroup	面会制限なし			面会制限あり			Weight	Mean Difference IV, Random, 95% CI	Mean Difference IV, Random, 95% CI
	Mean	SD	Total	Mean	SD	Total			
Study 10	3.1	0.3	115	3.9	0.3	111	100.0%	-0.80 [-0.88, -0.72]	
Total (95% CI)			115			111	100.0%	-0.80 [-0.88, -0.72]	

Heterogeneity: Not applicable  
 Test for overall effect:  $Z = 20.04$  ( $P < 0.00001$ )

