

## CQ 18-13 小児敗血症に対して厳密な血糖管理を行うか？

### 検索データベース

- MEDLINE (PubMed/Ovid)
- CENTRAL
- 医学中央雑誌
- その他 ( )

### 検索式とヒット数

PubMed search strategy (検索日 2019年4月22日)

#1	Sepsis[mesh] OR sepsis[tiab] OR septic[tiab] OR "Systemic inflammatory response syndrome"[mesh] OR "Systemic inflammatory response syndrome"[tiab] OR SIRS[tiab] OR "Multiple Organ Failure"[mesh] OR "Multiple Organ Failure"[tiab] OR MOF[tiab] OR "critical illness"[mesh] OR "critical illness"[tiab] OR "critical care"[mesh] OR "critical care"[tiab] OR "intensive care units"[mesh] OR "intensive care units"[tiab] OR "intensive care unit"[tiab] OR ICU[tiab]	392921
#2	Adolescent[mesh] OR Adolescent[tiab] OR child[mesh] OR child[tiab] OR infant[mesh] OR infant[tiab] OR pediatrics[mesh] OR pediatrics[tiab]	3563234
#3	"Blood glucose"[mesh] OR "blood glucose"[tiab] OR "blood sugar"[tiab] OR "sugar, blood"[tiab] OR "glucose, blood"[tiab] OR insulins[mesh] OR insulins[tiab] OR insulin[tiab] OR hyperglycemia[mesh] OR hyperglycemia[tiab] OR hyperglycemias[tiab]	496570
#4	randomized controlled trial[pt] OR controlled clinical trial[pt] OR randomized[tiab] OR placebo[tiab] OR drug therapy[sh] OR randomly[tiab] OR trial[tiab] OR groups[tiab] NOT (animals [mh] NOT humans [mh])	3884449
#5	#1 AND #2 AND #3 AND #4	560

CENTRAL search strategy (検索日 2019年4月22日)

#1	MeSH descriptor: [Sepsis] explode all trees	3998
#2	(sepsis):ti,ab,kw	10248
#3	(septic):ti,ab,kw	4108

#4	MeSH descriptor: [Systemic Inflammatory Response Syndrome] explode all trees	4328
#5	("systemic inflammatory response syndrome"):ti,ab,kw	1020
#6	MeSH descriptor: [Multiple Organ Failure] explode all trees	384
#7	("multiple organ failure syndrome"):ti,ab,kw	1326
#8	(MOFS):ti,ab,kw	9
#9	MeSH descriptor: [critical illness] explode all trees	1845
#10	(critical illness):ti,ab,kw	3785
#11	MeSH descriptor: [critical care] explode all trees	1918
#12	(critical care):ti,ab,kw	8789
#13	("critical care patient"):ti,ab,kw	9
#14	("critical care unit"):ti,ab,kw	184
#15	MeSH descriptor: [intensive care units] explode all trees	3260
#16	(intensive care units):ti,ab,kw	5824
#17	(intensive care unit):ti,ab,kw	14392
#18	(ICU):ti,ab,kw	10341
#19	#1 OR #2 OR #3 OR #4 OR #5 OR #6 OR #7 OR #8 OR #9 OR #10 OR #11 OR #12 OR #13 OR #14 OR #15 OR #16 OR #17 OR #18	38105
#20	MeSH descriptor: [adolescent] explode all trees	98970
#21	(adolescent):ti,ab,kw	122359
#22	MeSH descriptor: [child] explode all trees	1142
#23	(child):ti,ab,kw	130265
#24	MeSH descriptor: [pediatrics] explode all trees	624
#25	(pediatrics):ti,ab,kw	3545
#26	#20 OR #21 OR #22 OR #23 OR #24 OR #25	212218
#27	MeSH descriptor: [blood glucose] explode all trees	14974
#28	(blood glucose):ti,ab,kw	43794
#29	("blood glucose control"):ti,ab,kw	907
#30	(blood sugar):ti,ab,kw	4110
#31	("blood sugar level"):ti,ab,kw	246
#32	("blood-sugar"):ti,ab,kw	2960
#33	("blood-sugars"):ti,ab,kw	110
#34	(sugar, blood):ti,ab,kw	4110
#35	(glucose, blood):ti,ab,kw	43794

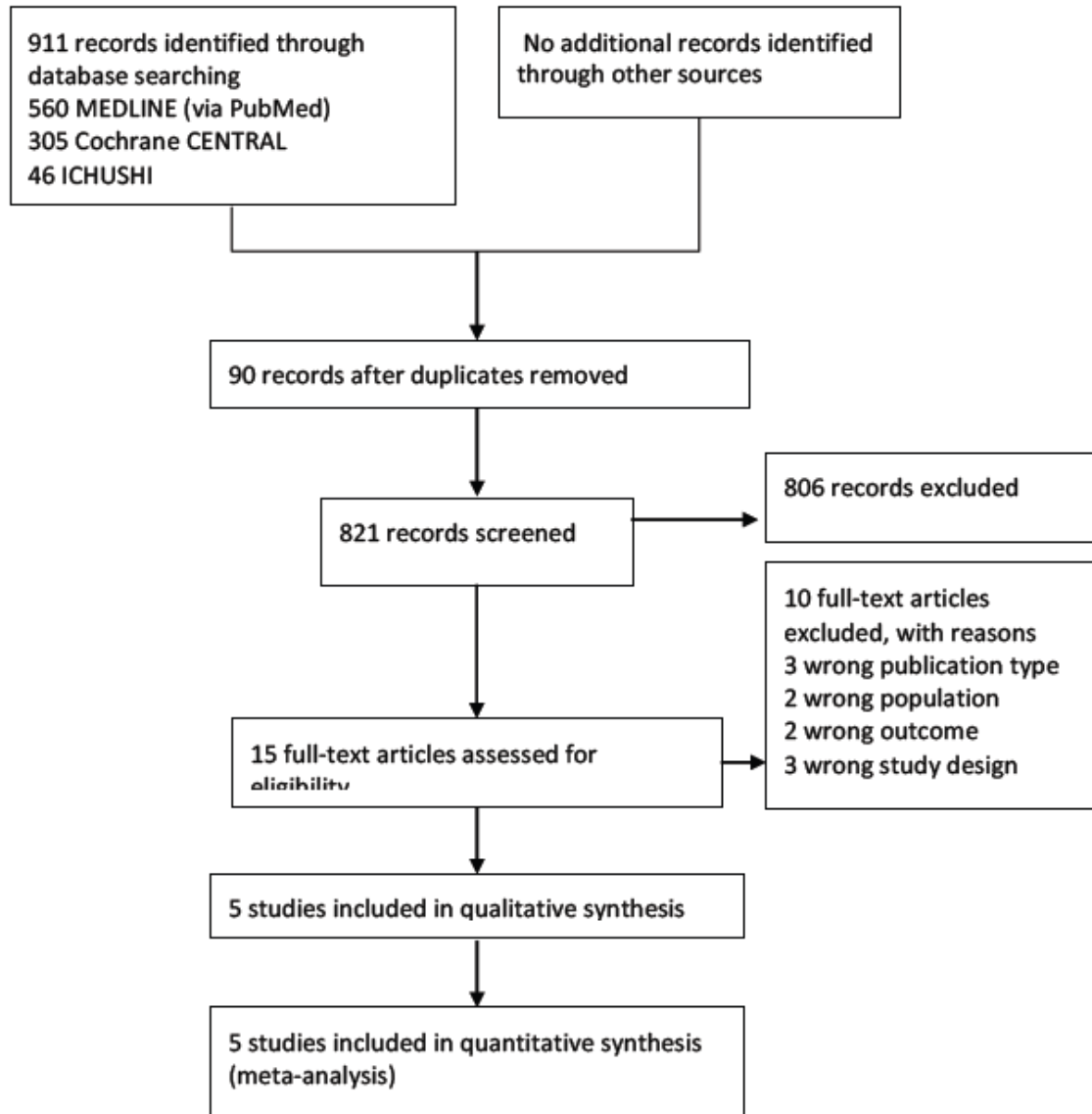
#36	MeSH descriptor: [Insulins] explode all trees	12928
#37	(insulins):ti,ab,kw	674
#38	(insulin):ti,ab,kw	52760
#39	MeSH descriptor: [Hyperglycemia] explode all trees	2602
#40	(hyperglycemia):ti,ab,kw	6894
#41	(hyperglycemias):ti,ab,kw	10
#42	#27 OR #28 OR #29 OR #30 OR #31 OR #32 OR #33 OR #34 OR #35 OR #36 OR #37 OR #38 OR #39 OR #40 OR #41	73013
#43	#19 AND #26 AND #42	305

医学中央雑誌 search strategy(検索日 2019年4月20日)

#1	((敗血症/TH or 敗血症/TA)) and (PT=会議録除く)	22405
#2	((全身性炎症反応症候群/TH or 全身性炎症反応症候群/TA)) and (PT=会議録除く)	17730
#3	((多臓器不全/TH or 多臓器不全/TA)) and (PT=会議録除く)	6286
#4	((クリティカルケア/TH or クリティカルケア/TA)) and (PT=会 議録除く)	6056
#5	((ICU/TH or ICU/TA)) and (PT=会議録除く)	45475
#6	((CCU/TH or CCU/TA)) and (PT=会議録除く)	20375
#7	(重篤/TA) and (PT=会議録除く)	30174
#8	#1 or #2 or #3 or #4 or #5 or #6 or #7	120577
#9	((小児/TH or 小児/TA)) and (PT=会議録除く)	188404
#10	((乳児/TH or 乳児/TA)) and (PT=会議録除く)	37727

#11	((新生児/TH or 新生児/TA)) and (PT=会議録除く)	55145
#12	((思春期/TH or 思春期/TA)) and (PT=会議録除く)	14657
#13	#9 or #10 or #11 or #12	244884
#14	((血糖/TH or 血糖/TA)) and (PT=会議録除く)	43074
#15	((Insulin/TH or Insulin/TA)) and (PT=会議録除く)	25948
#16	#14 or #15	59345
#17	(ランダム化比較試験/TH or 準ランダム化比較試験/TH or ランダム化/AL or 無作為化/AL or 比較試験/AL or 臨床試験/AL or プラセボ/AL or 対照/AL or コントロール/AL or 臨床研究/AL) and (PT=会議録除く)	229335
#18	#8 and #13 and #16 and #17	46

PRISMA フロー図

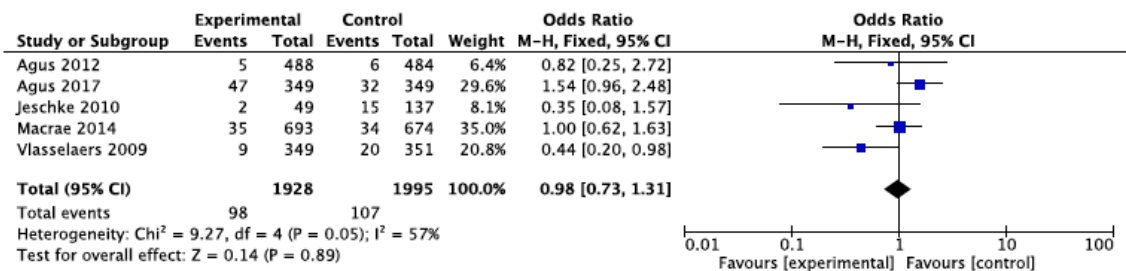


Risk of Bias サマリー

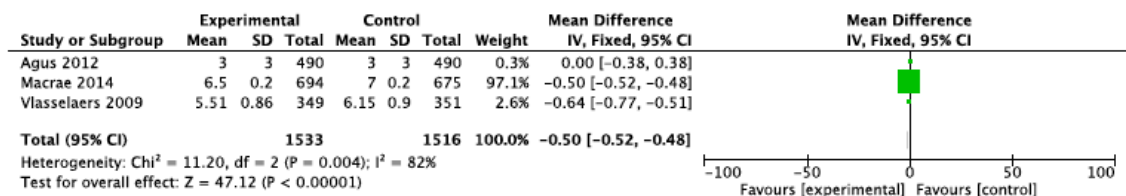
	Random sequence generation (selection bias)	Allocation concealment (selection bias)	Blinding of participants and personnel (performance bias)	Blinding of outcome assessment (detection bias)	Incomplete outcome data (attrition bias)	Selective reporting (reporting bias)	Other bias
Agus 2012	+	+	+	+	+	+	+
Agus 2017	+	+	+	+	+	+	+
Jeschke 2010	?	?	+	+	+	+	+
Macrae 2014	+	+	+	+	+	+	+
Vlasselaers 2009	+	+	+	+	+	+	+

フォレストプロット

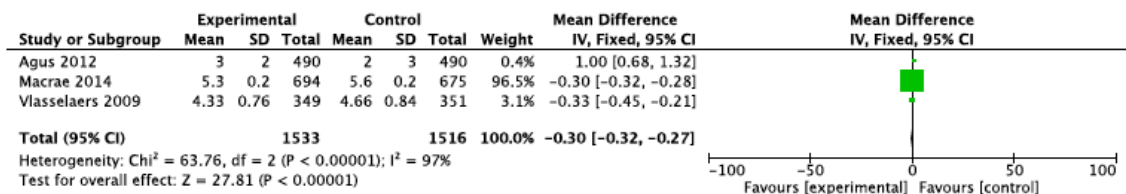
アウトカム① 全原因死亡



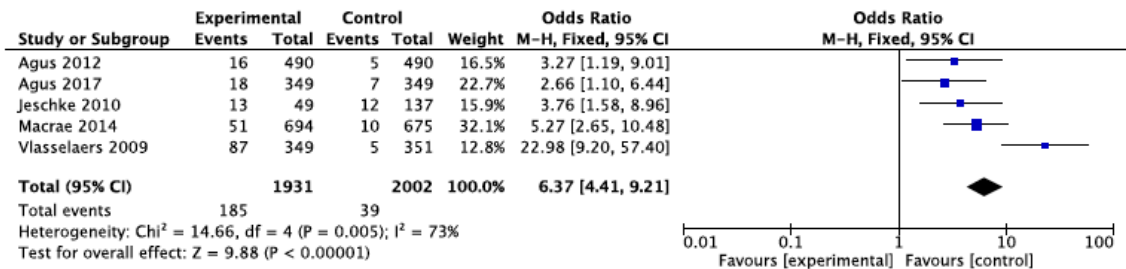
### アウトカム② ICU入室期間



### アウトカム③ 人工呼吸期間



### アウトカム④ 低血糖発生頻度



# ファンネルプロット

