

## CQ 18-1 小児敗血症の初期蘇生に診療アルゴリズムを用いるか？

### 検索データベース

- MEDLINE (PubMed/Ovid)
- CENTRAL
- 医学中央雑誌
- その他 ( )

### 検索式とヒット数

PubMed search strategy (検索日 2019 年 4 月 24 日)

#1	Sepsis[mesh] OR sepsis[tiab] OR septic[tiab]	192114
#2	Adolescent[mesh] OR Adolescent[tiab] OR child[mesh] OR child[tiab] OR infant[mesh] OR infant[tiab] OR pediatrics[mesh] OR pediatrics[tiab]	3564139
#3	“Pediatric advanced life support”[tiab] OR pals[tiab]	1150
#4	“early goal directed therapy”[tiab] OR “early goal directed therapy”[Mesh]	511
#5	#3 OR #4	1660
#6	#1 AND #2 AND #5	36

#1	Sepsis[mesh] OR sepsis[tiab] OR septic[tiab]	192114
#2	Adolescent[mesh] OR Adolescent[tiab] OR child[mesh] OR child[tiab] OR infant[mesh] OR infant[tiab] OR pediatrics[mesh] OR pediatrics[tiab]	3564139
#3	Algorithm[MeSH] OR algorithm[tiab]	377576
#4	Guideline[tiab] OR “guidelines as topic”[MeSH] OR guideline[Publication Type] OR “Practice Guideline” [Publication Type]	210761
#5	“Pediatric advanced life support”[tiab] OR pals[tiab]	1150
#6	“early goal directed therapy”[tiab] OR “early goal directed therapy”[Mesh]	511
#7	#3 OR #4 OR #5 OR #6	583002
#8	#1 AND #2 AND #7	888

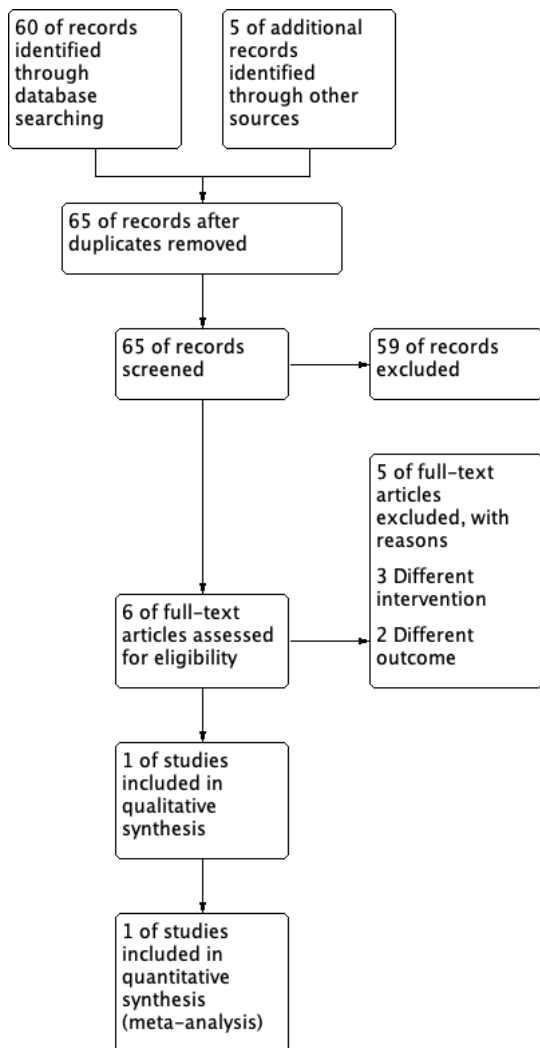
CENTRAL search strategy(検索日 2019 年 4 月 24 日)

#1	MeSH descriptor: [Sepsis] explode all trees	3998
#2	sepsis	11240
#3	septic	4372
#4	MeSH descriptor: [Infant] explode all trees	15207
#5	Infant*	58114
#6	MeSH descriptor: [Child] explode all trees	1142
#7	Child*	159917
#8	MeSH descriptor: [Adolescent] explode all trees	98970
#9	Adolescent	124823
#10	Pediatric	47489
#11	Paediatric	47480
#12	pediatric advanced life support	416
#13	pals	235
#14	MeSH descriptor: [Early Goal-Directed Therapy] explode all trees	3
#15	early goal directed therapy	468
#16	#1 OR #2 OR #3	14768
#17	#4 OR #5 OR #6 OR #7 OR #8 OR #9 OR #10 OR #11	264609
#18	#12 OR #13 OR #14 OR #15	761
#19	#16 AND #17 AND #18	114(うち”Trials”は 19)

医学中央雑誌 search strategy(検索日 2019 年 4 月 16 日)

#1	((ショック-敗血症性/TH or ショック-敗血症性/TA) or (敗血症/TH or 敗血症/TA)) and (PT=会議録除く)	22405
#2	((小児/TH or 小児/TA)) and (PT=会議録除く)	188404
#3	((乳児/TH or 乳児/TA)) and (PT=会議録除く)	37727
#4	((幼児/TH or 幼児/TA)) and (PT=会議録除く)	26108
#5	(PALS/TA or "pediatric advanced life support/TA"/AL) and (PT=会議録除く)	858
#6	("Early Goal-Directed Therapy"/TH or "Early Goal-Directed Therapy"/TA) and (PT=会議録除く)	58
#7	#2 OR #3 OR #4	216902
#8	#5 OR #6	916
#9	#1 AND #7 AND #8	5

PRISMA フロー図



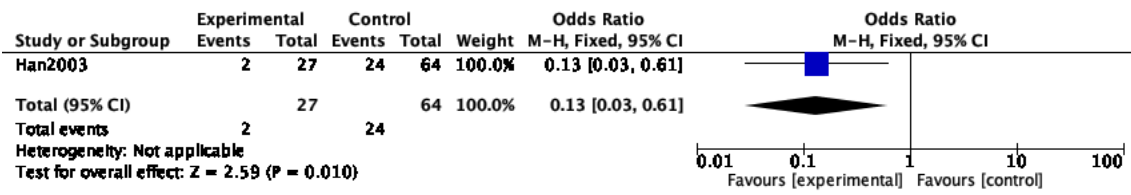
## Risk of Bias サマリー

アウトカム 1 死亡率

<b>Han2003</b>	Bias due to confounding	⊖
	Bias in selection of participants into the study	⊕
	Bias in classification of interventions	⊖
	Bias due to deviations from intended interventions	⊕
	Bias due to missing data	?
	Bias in measurement of outcomes	⊕
	Bias in selection of the reported result	?

## フォレストプロット

アウトカム 1 死亡率



## ファンネルプロット

アウトカム 1 死亡率 (mortality)

