

CQ 15-5

敗血症性 DIC にリコンビナント・トロンボモジュリン投与を行うか？

検索データベース

MEDLINE (PubMed/Ovid)

CENTRAL

医学中央雑誌

その他 ()

検索式とヒット数

PubMed search strategy (検索日 2019 年 4 月 27 日)

#1	“Sepsis” [Mesh] OR “Shock, Septic” [Mesh] OR “Systemic Inflammatory Response Syndrome” [Mesh] OR “Multiple Organ Failure” [Mesh] OR “Critical Illness” [Mesh] OR “Critical Care” [Mesh] OR “Intensive Care Units” [Mesh] OR “Purpura Fulminans” [mesh] OR Thrombophilia [mesh] OR Toxemia [mesh] OR “sepsis” [tiab] OR (“septic” [tiab] AND “shock” [tiab]) OR “systemic inflammatory response syndrome” [tiab] OR SIRS [tiab] OR “Purpura Fulminans” [tiab] OR Thrombophilia [tiab] OR Toxemia [tiab] OR “multiple organ dysfunction” [tiab] OR “multiple organ failure” [tiab] OR MOF [tiab] OR “critically ill” [tiab] OR “stressed” [tiab] OR “critical care” [tiab] OR “intensive care” [tiab] OR “Disseminated Intravascular Coagulation” [Mesh] OR “Thrombocytopenia” [Mesh] OR “Blood Coagulation Disorders” [Mesh] OR “Disseminated Intravascular Coagulation” [tiab] OR “DIC” [tiab] OR “thrombocytopenic” [tiab] OR “coagulopathy” [tiab] OR (“Coagulation” [tiab] AND “Disorder*” [tiab])	574410
#2	“Thrombomodulin” [Mesh] OR “recombinant human soluble thrombomodulin” [tiab] OR “recombinant thrombomodulin” [tiab] OR “ART-123” [tiab] OR “ART123” [tiab] OR “thrombomodulin” [tiab] OR “thrombomodulin alpha” [tiab] OR rTM [tiab] OR rhTM [tiab] OR “recomodulin” [tiab]	4906
#3	“randomized controlled trial” [pt] OR “controlled clinical trial” [pt] OR “randomized” [tiab] OR “randomly” [tiab] OR “placebo” [tiab] OR “clinical trials as topic” [mesh:noexp] OR “trial” [ti] NOT (“animals” [mh] NOT “humans” [mh])	1123161

#4	#1 AND #2 AND #3	85
----	------------------	----

CENTRAL search strategy(検索日 2019年4月27日)

#1	MeSH descriptor: [Sepsis] explode all trees	3998
#2	MeSH descriptor: [Shock, Septic] explode all trees	771
#3	MeSH descriptor: [Systemic Inflammatory Response Syndrome] explode all trees	4328
#4	MeSH descriptor: [Multiple Organ Failure] explode all trees	384
#5	MeSH descriptor: [Critical Illness] explode all trees	1845
#6	MeSH descriptor: [Critical Care] explode all trees	1918
#7	MeSH descriptor: [Intensive Care Units] explode all trees	3260
#8	(sepsis):ti,ab,kw	10248
#9	MeSH descriptor: [Thrombophilia] explode all trees	340
#10	MeSH descriptor: [Toxemia] explode all trees	414
#11	(septic):ti,ab,kw	4108
#12	(systemic inflammatory response syndrome):ti,ab,kw	1194
#13	(SIRS):ti,ab,kw	676
#14	(multiple organ dysfunction):ti,ab,kw	772
#15	(multiple organ failure):ti,ab,kw	1667
#16	(MOF):ti,ab,kw	141
#17	(critically ill):ti,ab,kw	5980
#18	(stressed):ti,ab,kw	958
#19	(critical care):ti,ab,kw	8789
#20	(intensive care):ti,ab,kw	25082
#21	(toxemia):ti,ab,kw	285
#22	(Thrombophilia):ti,ab,kw	456
#23	MeSH descriptor: [Disseminated Intravascular Coagulation] explode all trees	105
#24	MeSH descriptor: [Thrombocytopenia] explode all trees	1144
#25	MeSH descriptor: [Blood Coagulation Disorders] explode all trees	1466
#26	(DIC):ti,ab,kw	327
#27	(disseminated intravascular coagul*):ti,ab,kw	383
#28	(thrombocytopenic):ti,ab,kw	1234
#29	(coagulopathy):ti,ab,kw	1091
#30	(Purpura Fulminant):ti,ab,kw	3

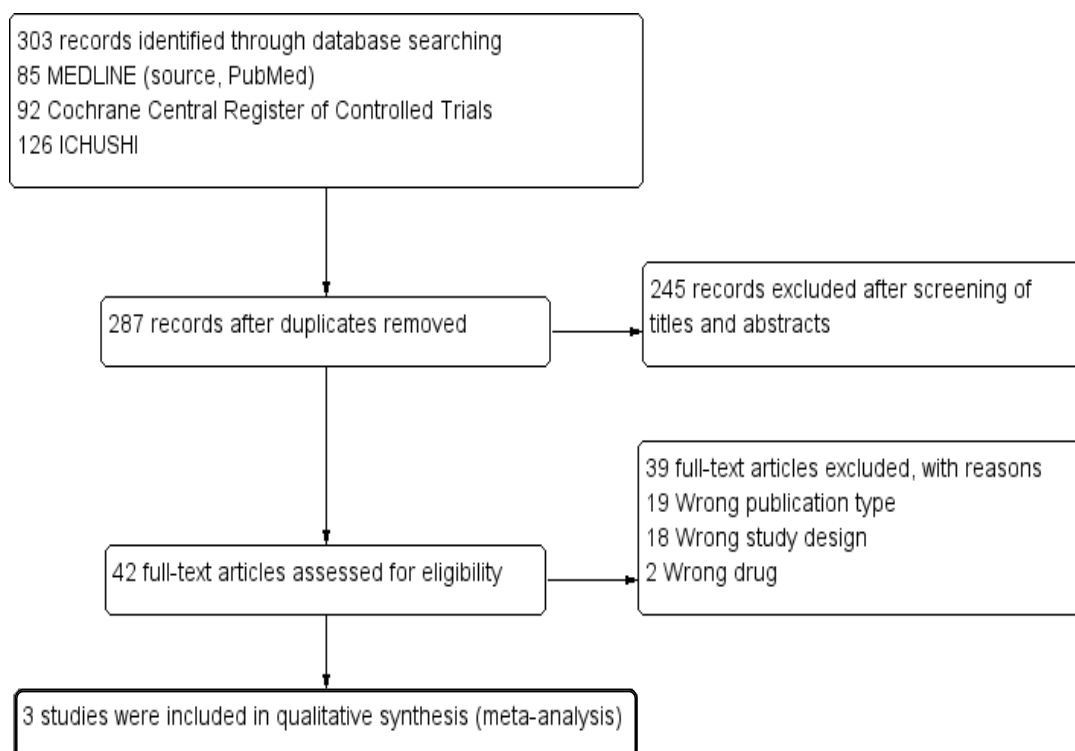
#31	#1 OR #2 OR #3 OR #4 OR #5 OR #6 OR #7 #8 OR #12 OR #13 OR #14 OR #15 OR #16 OR #17 OR #18 OR #19 OR #20 OR #23 OR #24 OR #25 OR #26 OR #28 OR #29 OR #30	42214
#32	MeSH descriptor: [Thrombomodulin] explode all trees	96
#33	(ART-123):ti,ab,kw	29
#34	(rTM):ti,ab,kw	59
#35	(rhTM):ti,ab,kw	17
#36	(recombinant human soluble thrombomodulin):ti,ab,kw	40
#37	(recombinant thrombomodulin):ti,ab,kw	79
#38	(Thrombomodulin alpha):ti,ab,kw	46
#39	#32 OR #33 OR #34 OR #35 OR #36 OR #37 OR #38	245
#40	#31 AND #40	92

医学中央雑誌 search strategy(検索日 2019年4月27日)

#1	((敗血症/TH or 敗血症/TA or sepsis/TA or septic/TA) and (PT=会議録除く)) and (PT=会議録除く)	23,321
#2	(ショック-敗血症性/TH or 敗血症性ショック/TA) and (PT=会議録除く)	6,145
#3	(多臓器不全/TH or 多臓器不全/TA) and (PT=会議録除く)	6,286
#4	(全身性炎症反応症候群/TH or 全身性炎症反応症候群/TA or systemic/AL and inflammatory/AL and response/AL and syndrome/TA or SIRS/TA) and (PT=会議録除く)	1,607
#5	(全身性炎症反応症候群/TH or 全身性炎症反応症候群/TA or "systemic inflammatory response syndrome"/TA or SIRS/TA) and (PT=会議録除く)	17,970
#6	(ICU/TH or ICU/TA or 集中治療室/TA) and (PT=会議録除く)	46,943
#7	(DIC/TH or DIC/TA or "Disseminated Intravascular Coagulation"/TA or 播種性血管内凝固/TA) and (PT=会議録除く)	43,791
#8	(血小板減少症/TH or 血小板減少/AL) and (PT=会議録除く)	17,864
#9	(血液凝固異常/TH or 血液凝固異常/TA and or 過凝固/TA or 凝固障害/TA or 凝固亢進/TA) and (PT=会議録除く)	1,515
#10	(電撃性紫斑病/TH or 電撃性紫斑病/TA) and (PT=会議録除く)	120
#11	#1 or #2 or #3 or #4 or #5 or #6 or #7 or #8 or #9 or #10	129,205
#12	(Thrombomodulin/TH or Thrombomodulin/TA or 遺伝子組み換え型ヒト可溶性トロンボモジュリン/TA or トロンボモジュリン/TA or リコモジュリン/TA or rTM/TA or rhTM/TA or "TM alfa"/TA or ART-123/TA) and	4,101

	(PT=会議録除く)	
#13	ランダム化比較試験/TH or 準ランダム化比較試験/TH or ランダム化/AL or 無作為化/AL or 比較試験/AL or 臨床試験/AL or プラセボ/AL or 対照/AL or コントロール/AL or 臨床研究/AL	301,704
#14	#11 and #12 and #13	126

PRISMA フロー図

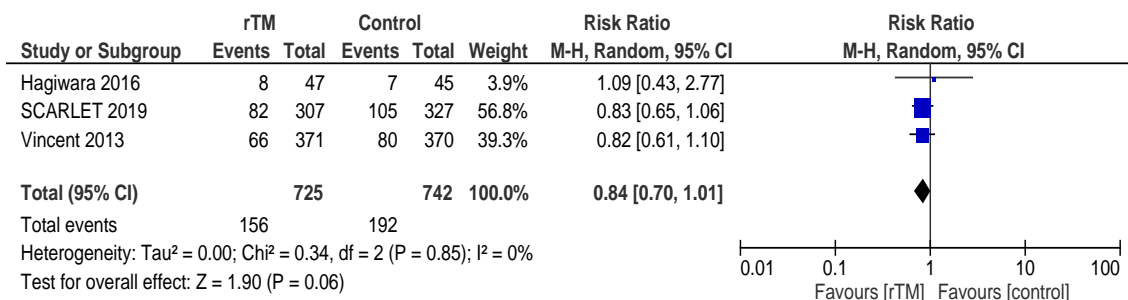


Risk of Bias サマリー

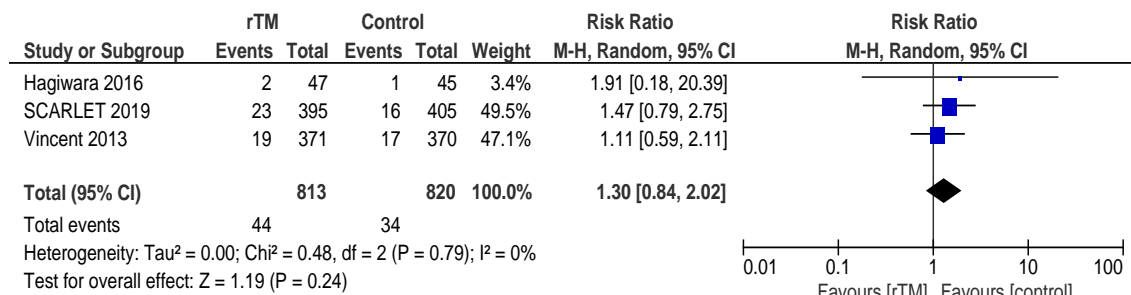
	Random sequence generation (selection bias)	Allocation concealment (selection bias)	Blinding of participants and personnel (performance bias)	Blinding of outcome assessment (detection bias)	Incomplete outcome data (attrition bias)	Selective reporting (reporting bias)	Other bias
Hagiwara 2016	+	?	-	-	+	-	+
SCARLET 2019	+	+	+	+	+	-	+
Vincent 2013	+	?	+	+	+	+	+

フォレストプロット

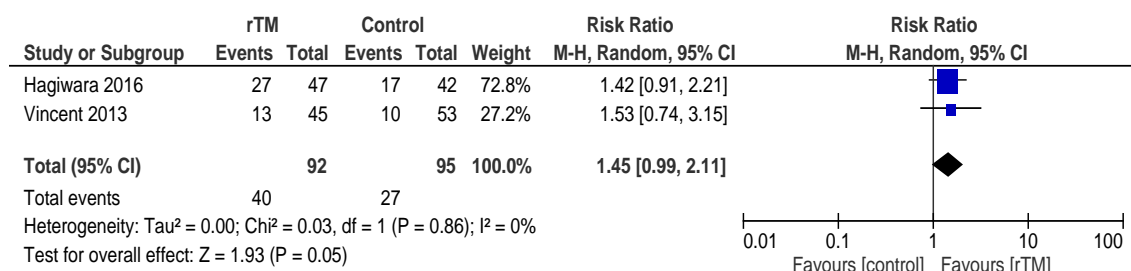
死亡率



出血性合併症

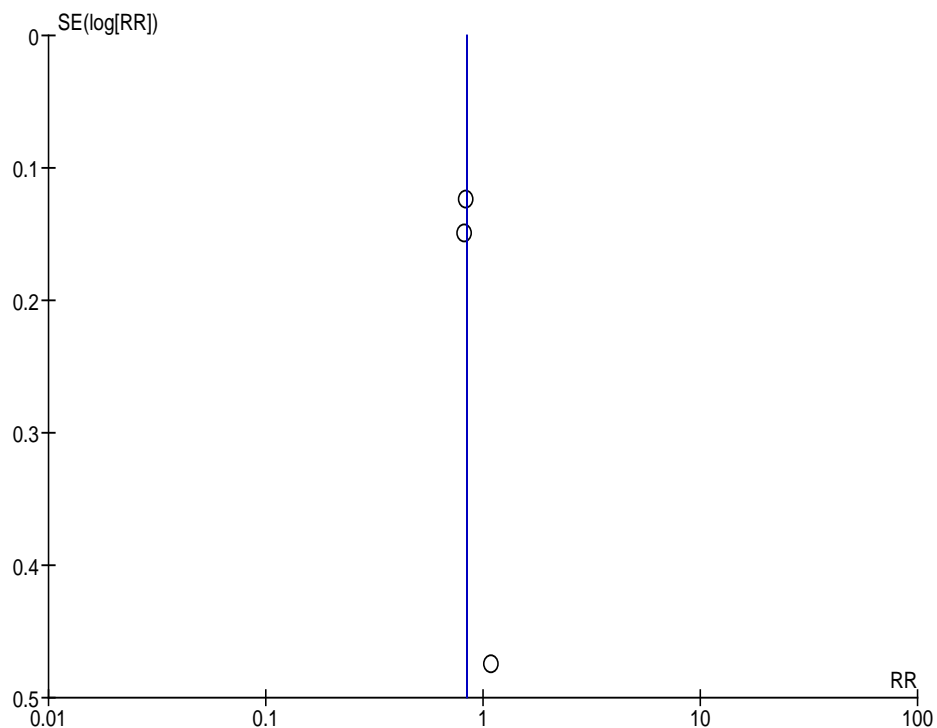


DIC 改善

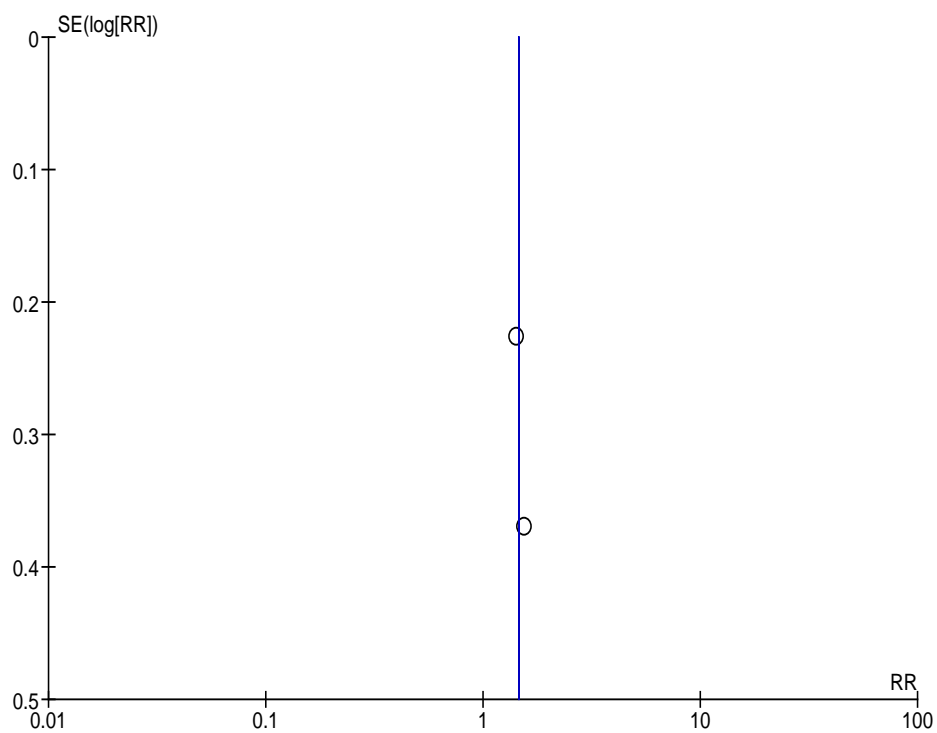


ファンネルプロット

死亡率



出血性合併症



DIC 改善

